

These construction documents were prepared specifically for the project site located at 2503 Parker Street, Omaha, NE. Subsequent use and/or modification of these documents for any project is strictly prohibited unless the documents are reviewed, modified and sealed by a registered architect in the jurisdiction of the proposed project for code compliance, constructability and site adaptation; the project is a HUD project; and, all users and the registered architect agree to defend, indemnify, and hold harmless Torti Gallas And Partners, Inc., its successors and the past, present and future employees of all of them, from all claims, losses, damages, judgments, cost, including reasonable attorney fees, and expenses that relate to or arise, in any way, out of the use or modification of the documents for other projects. Torti Gallas And Partners, Inc. retains all common law and statutory copyrights in these documents and their content. Any copying, use or modification of these documents without strict adherence to these conditions will be prosecuted as a violation of these copyrights.

Key Plan

Revisions

No. 01 Date 11/24/06
General Revisions

Interior Elevations

Date 10/31/06

Principal In Charge B.K.

Project Designer M.B.

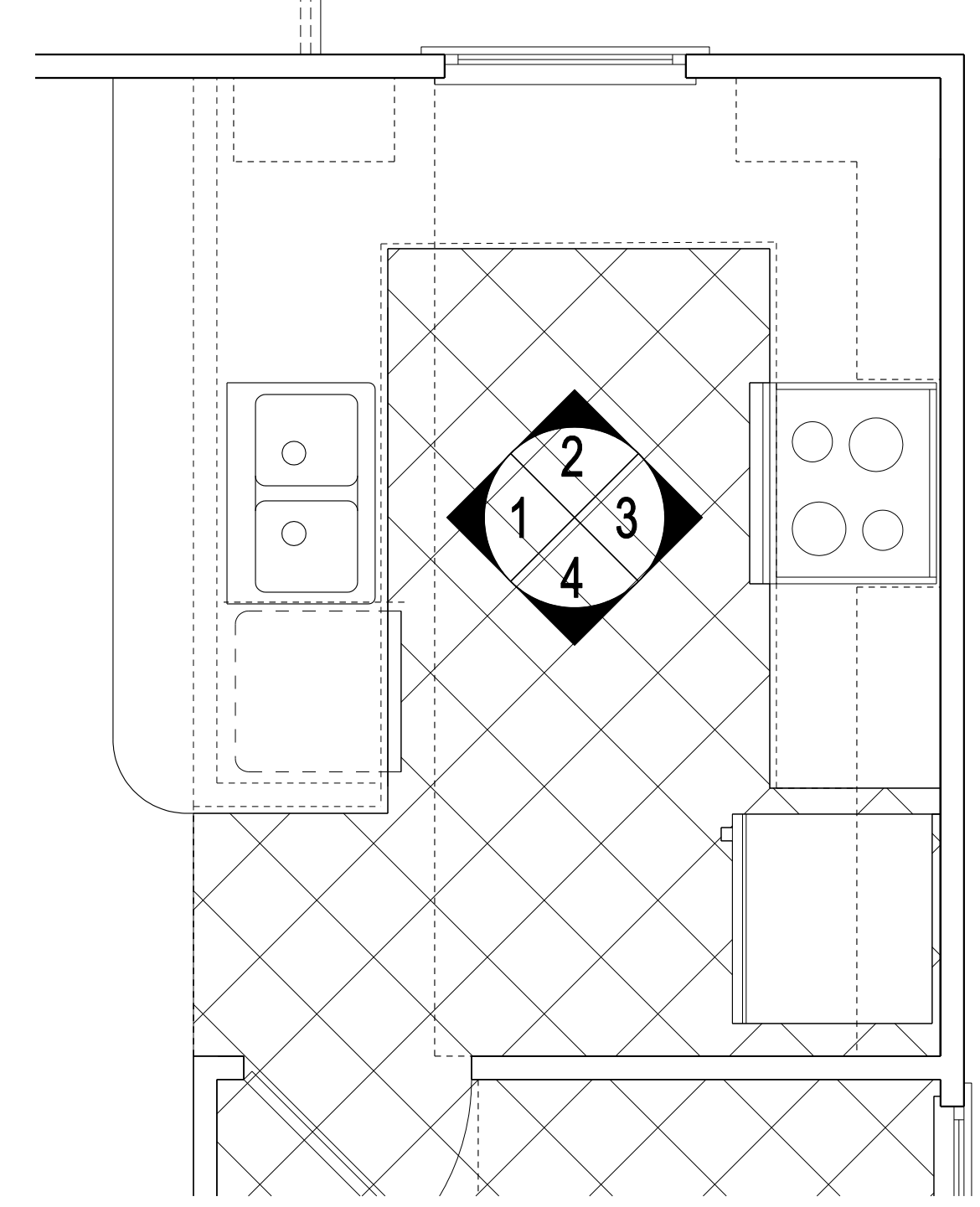
Project Architect. F.S.

Drawn B.K., F.S.

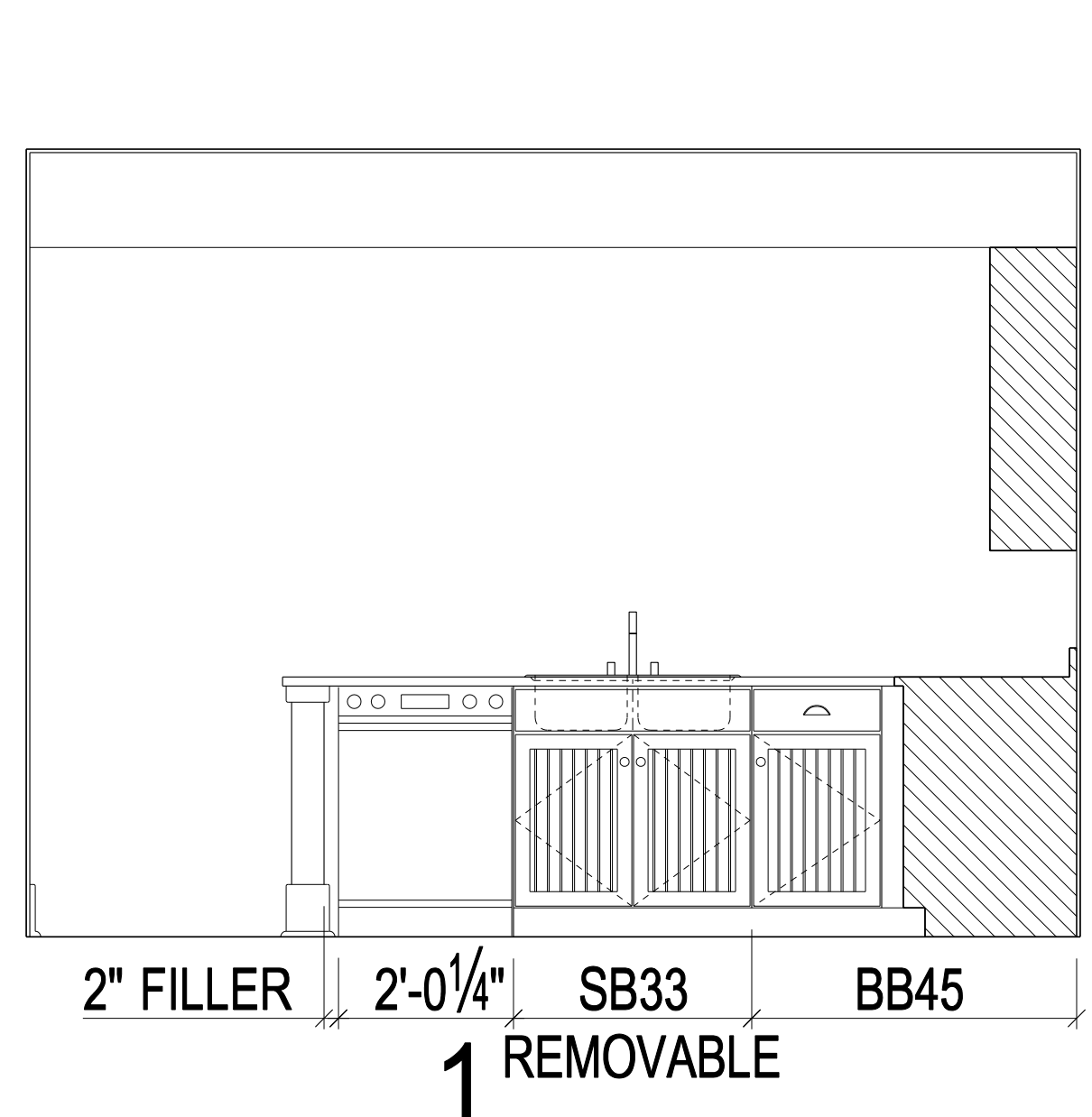
Job No. 05127.03

Scale 1/2" = 1' - 0"

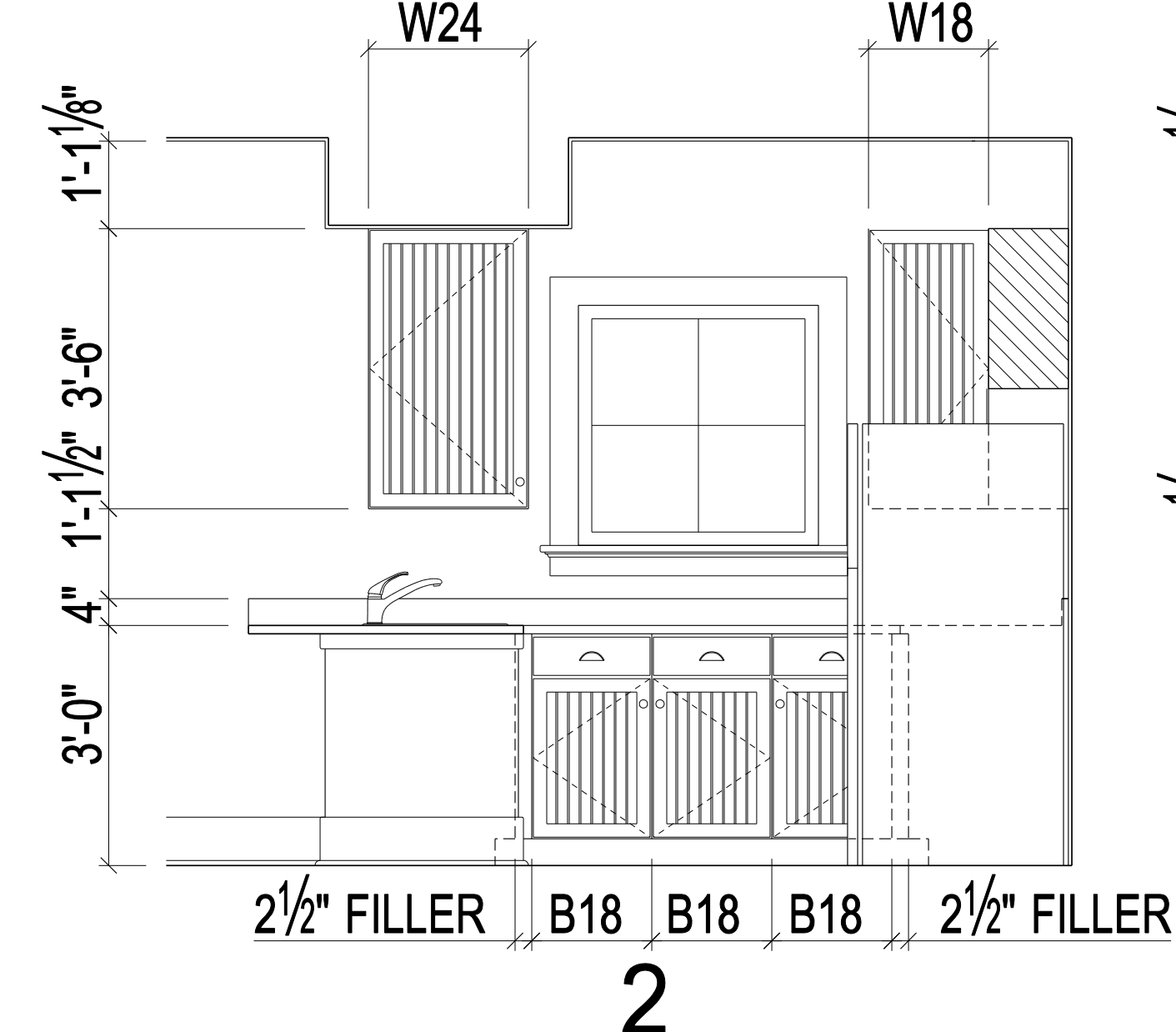
Drawing No. **A801**



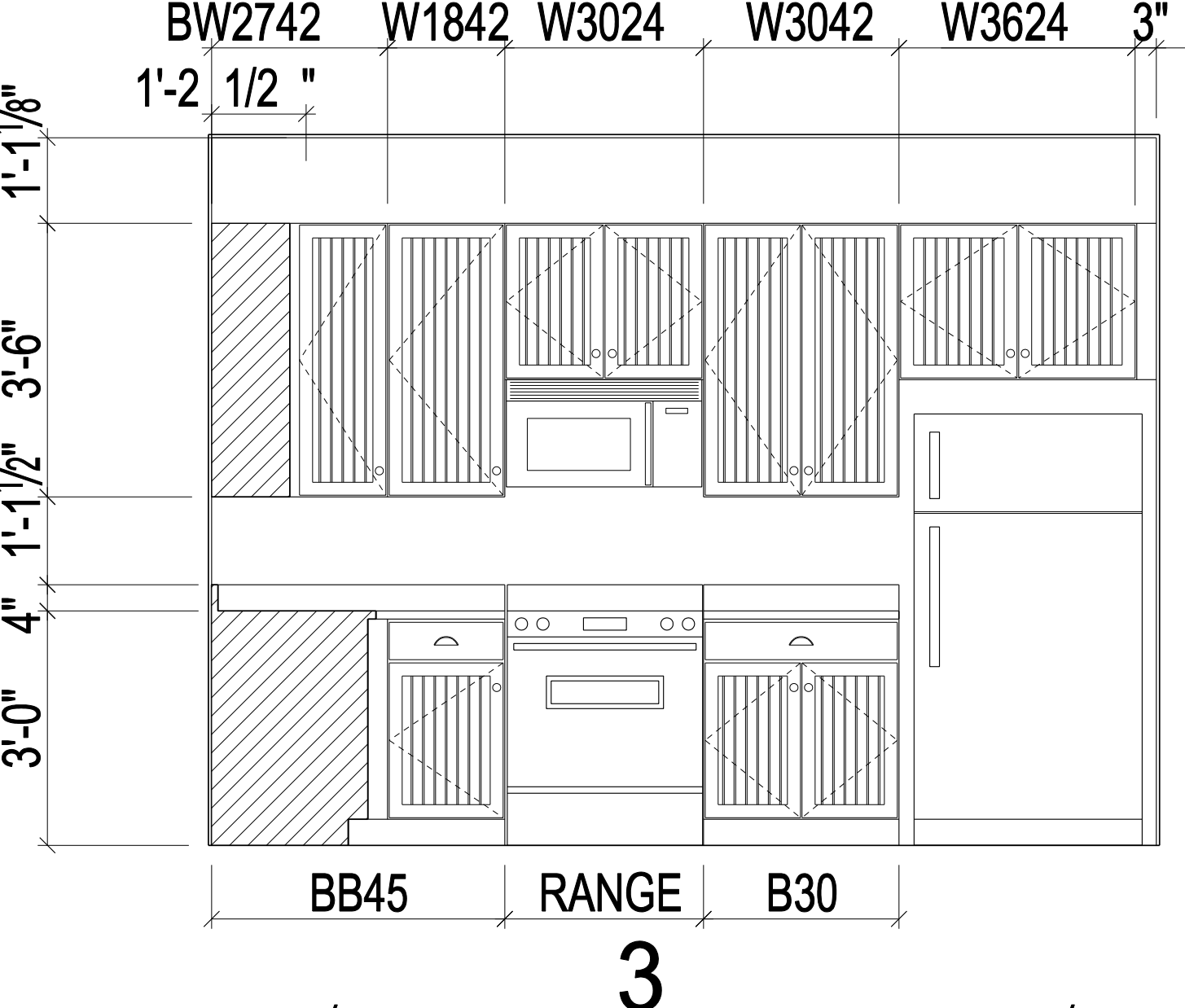
KITCHEN



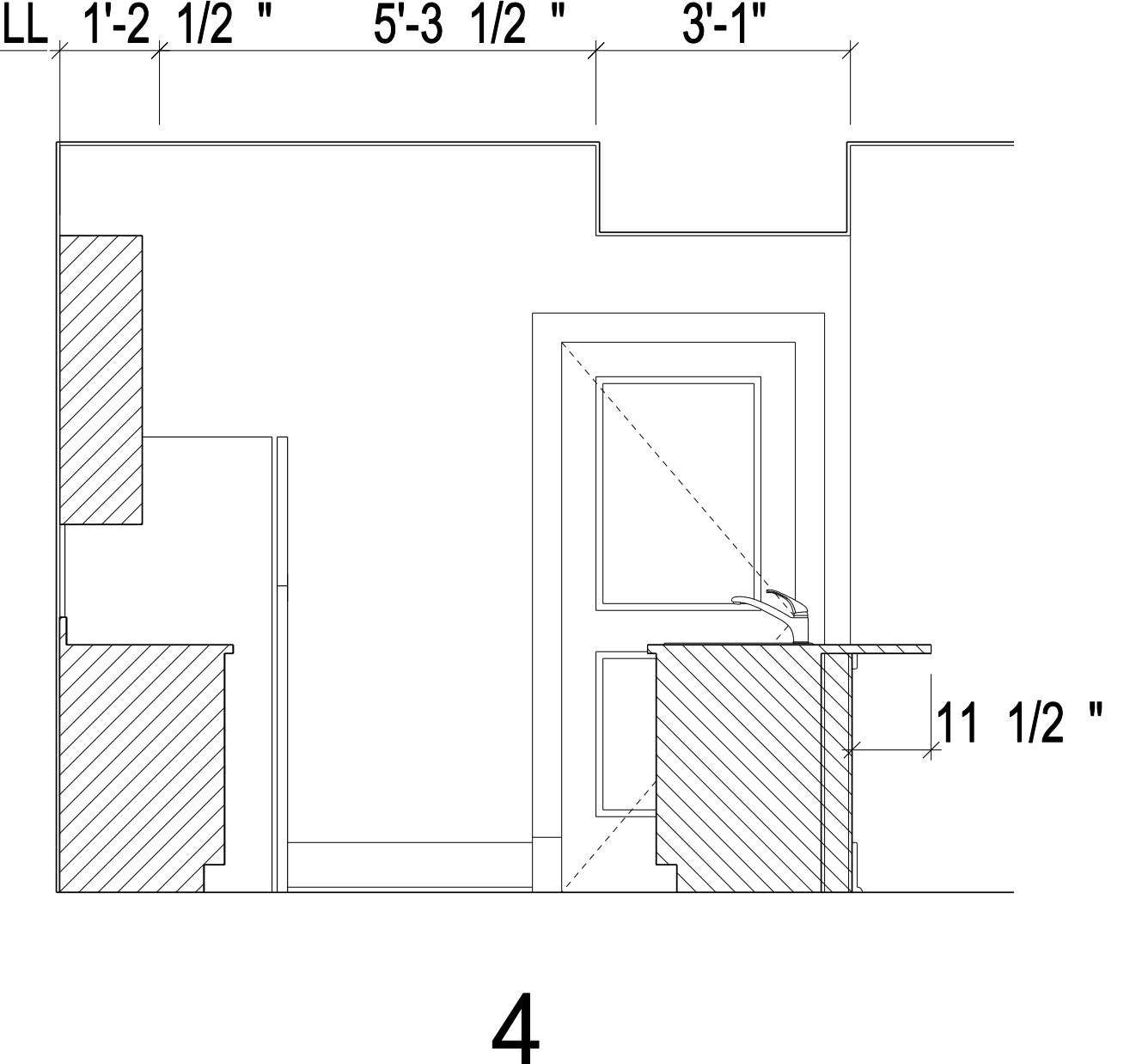
1



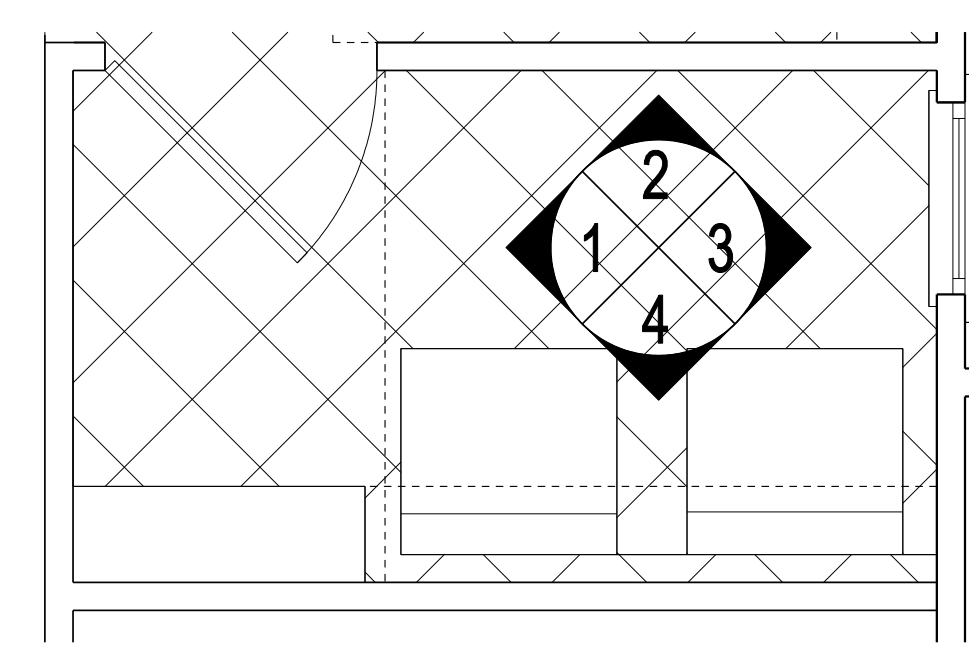
2



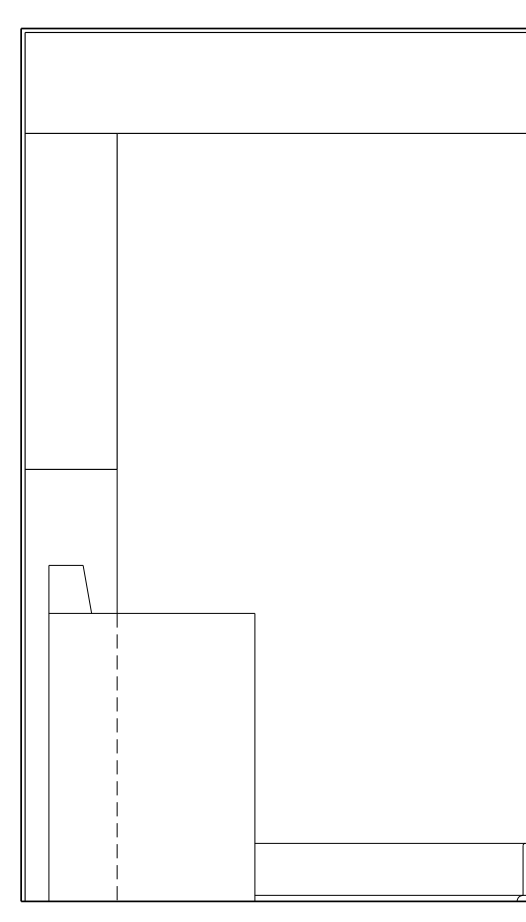
3



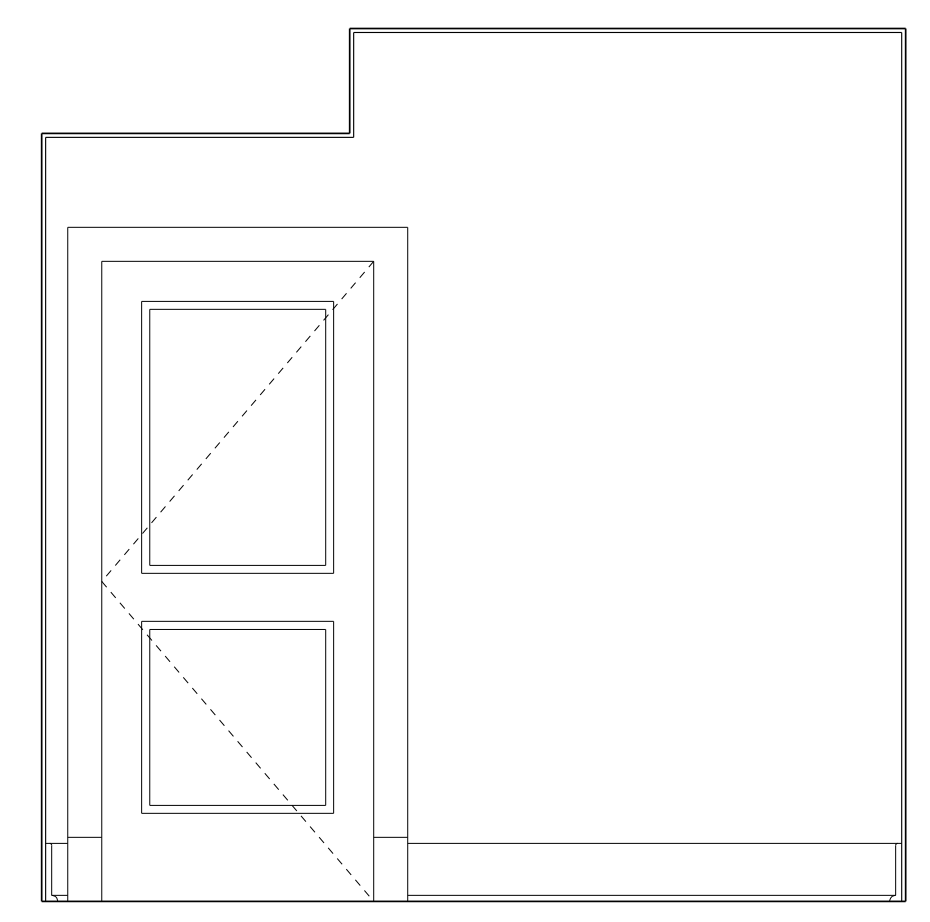
4



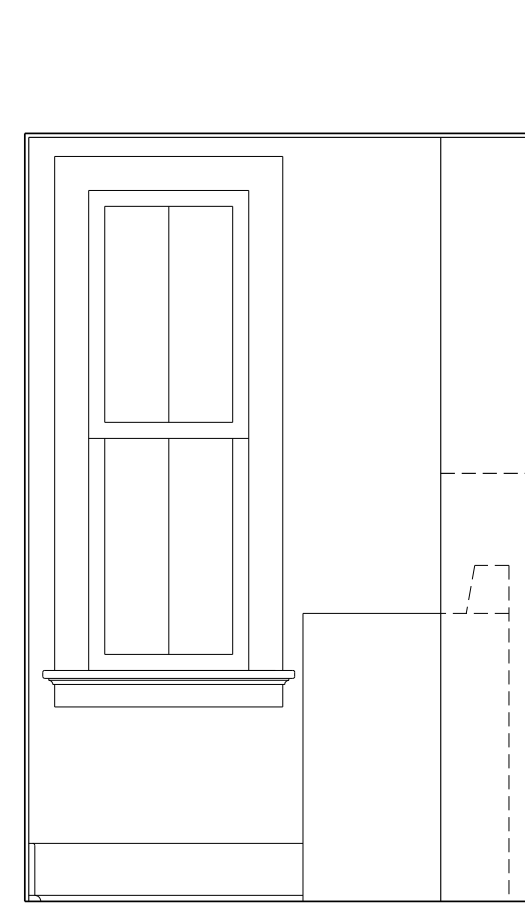
LAUNDRY



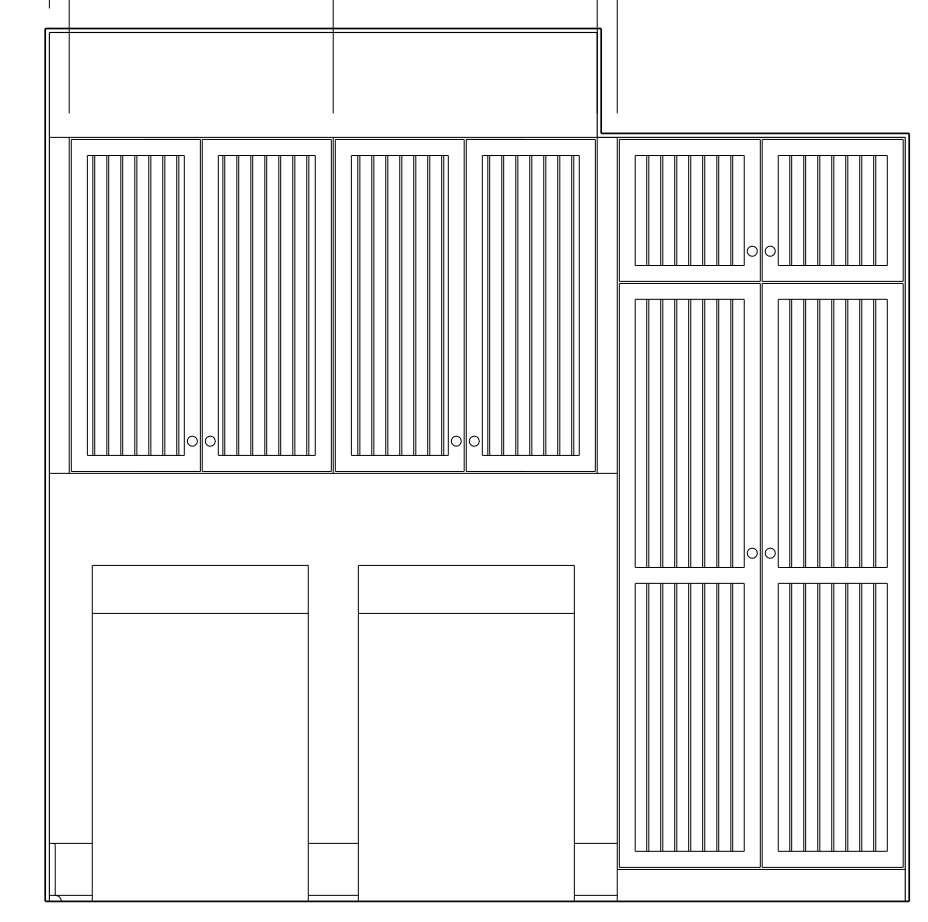
1



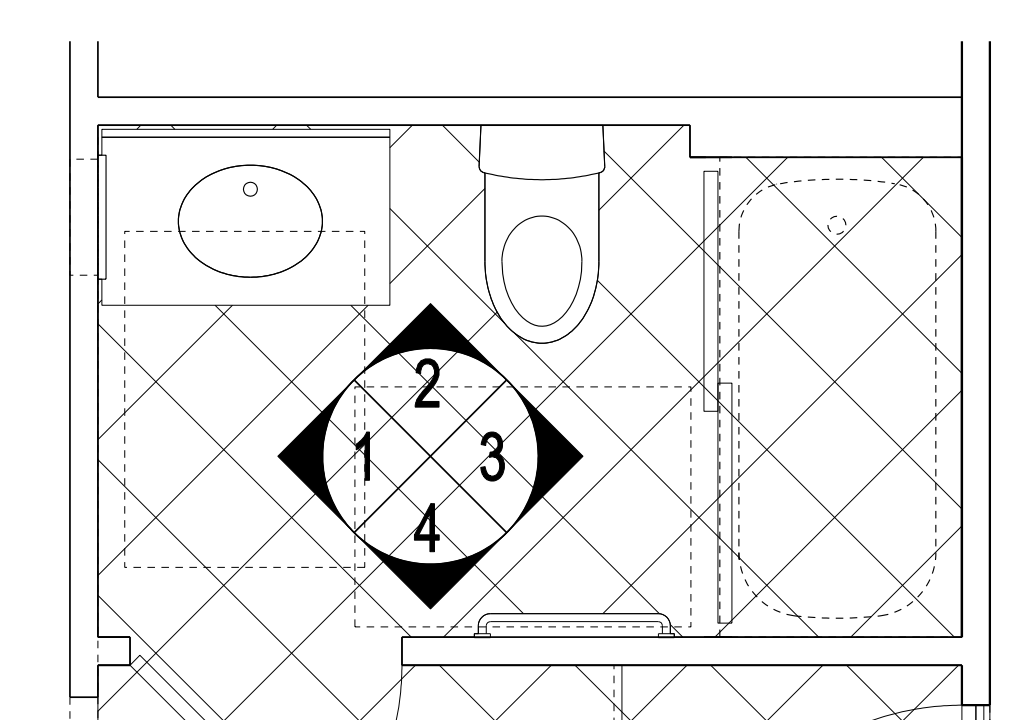
2



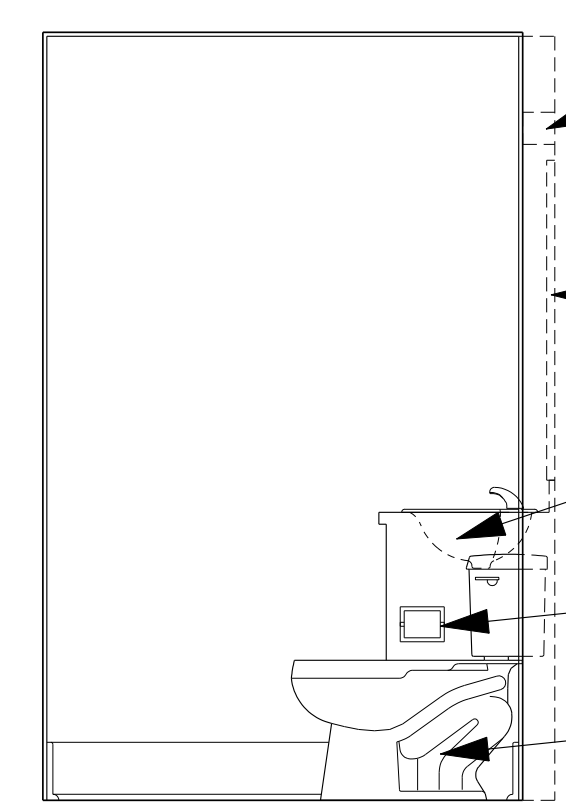
3



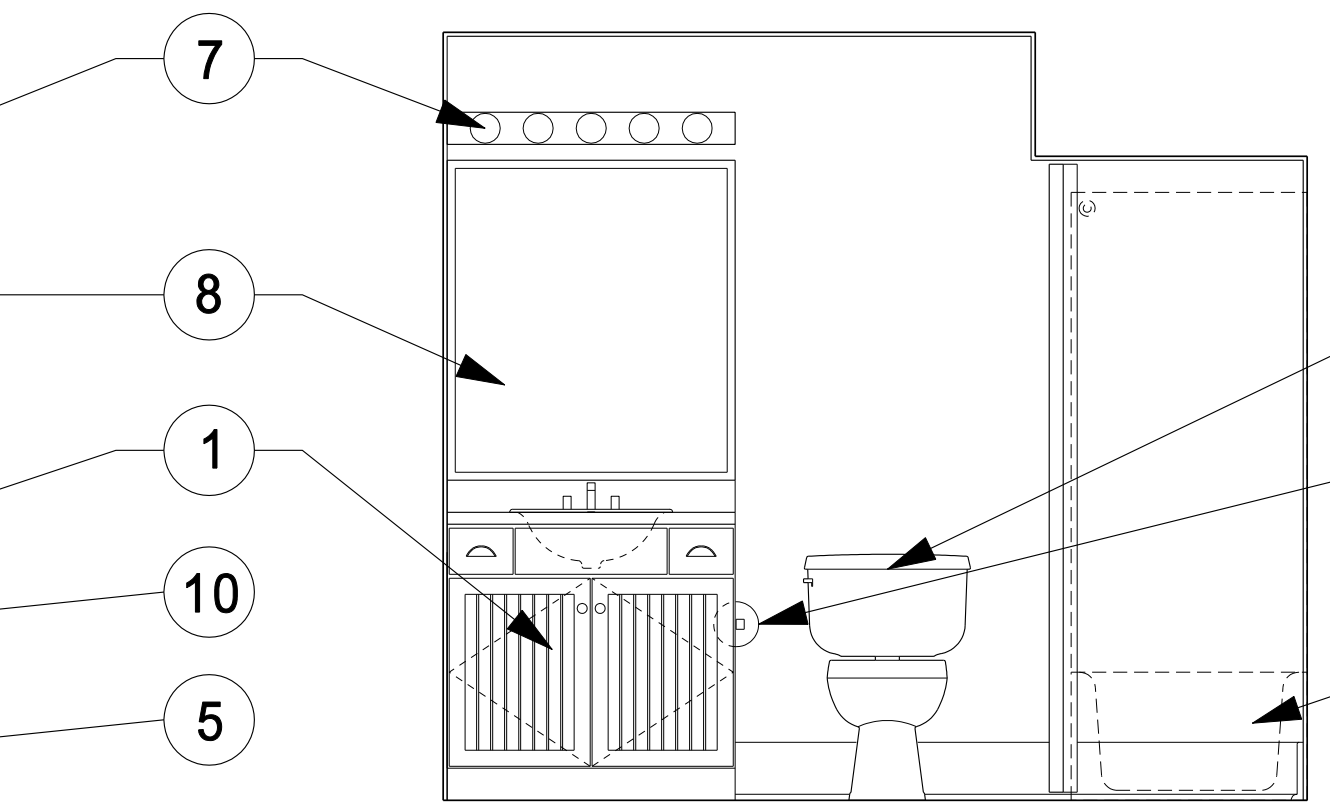
4



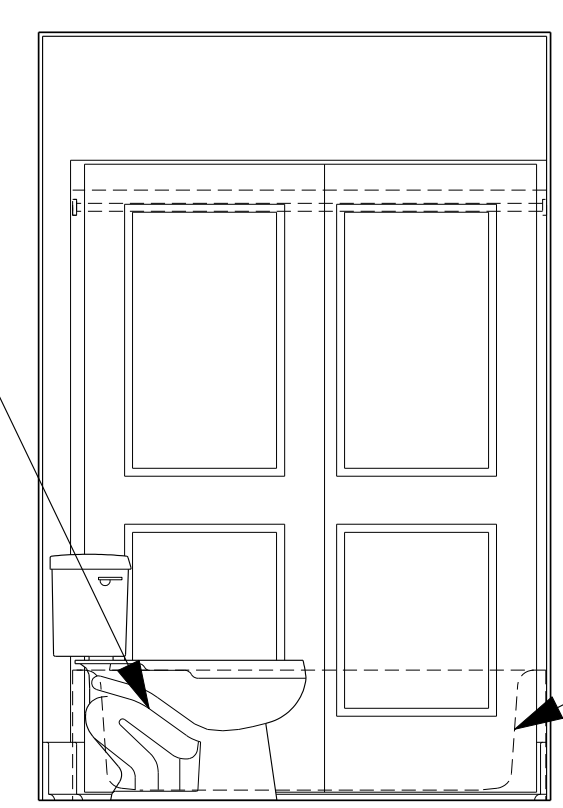
POWDER ROOM



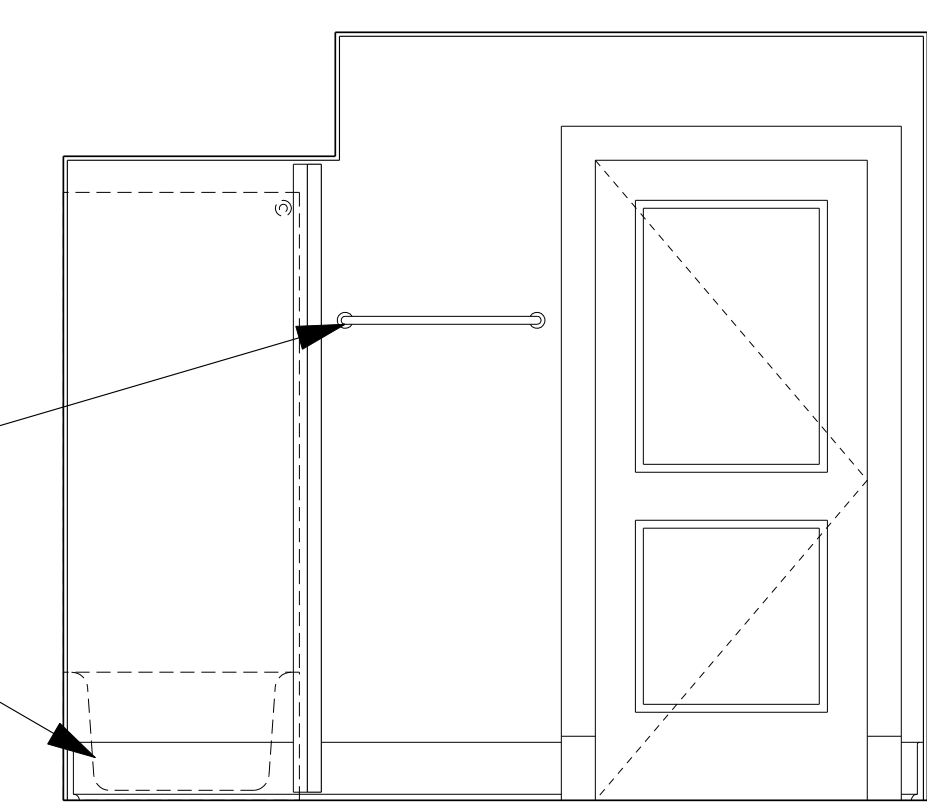
1



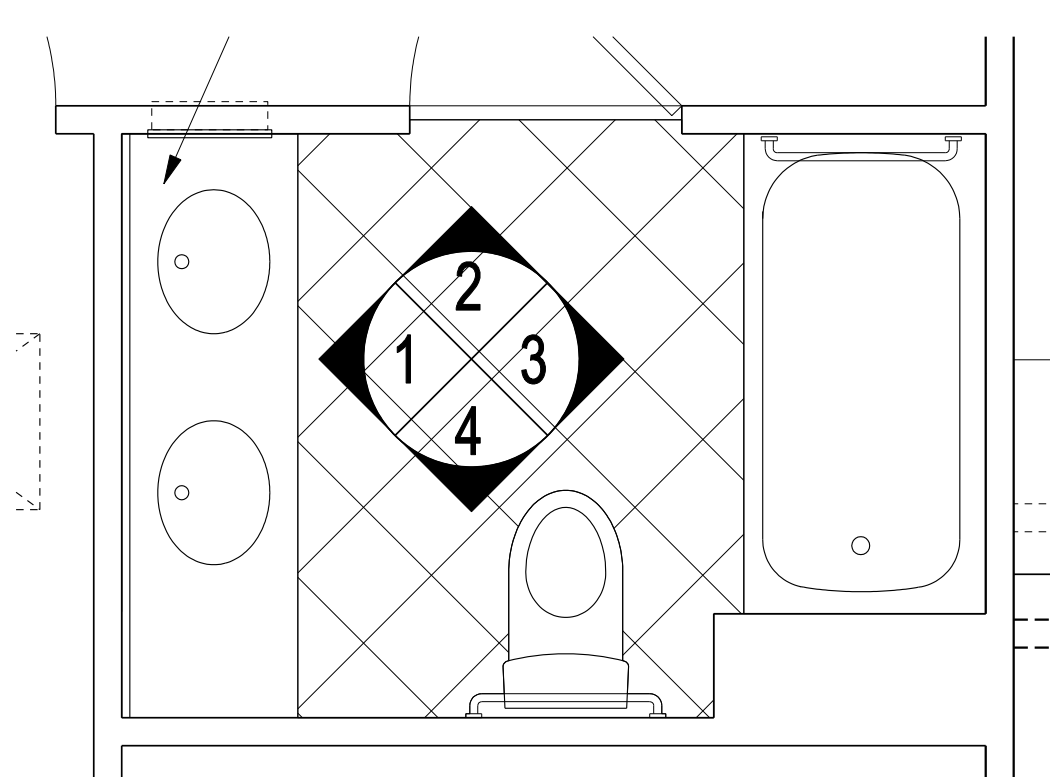
2



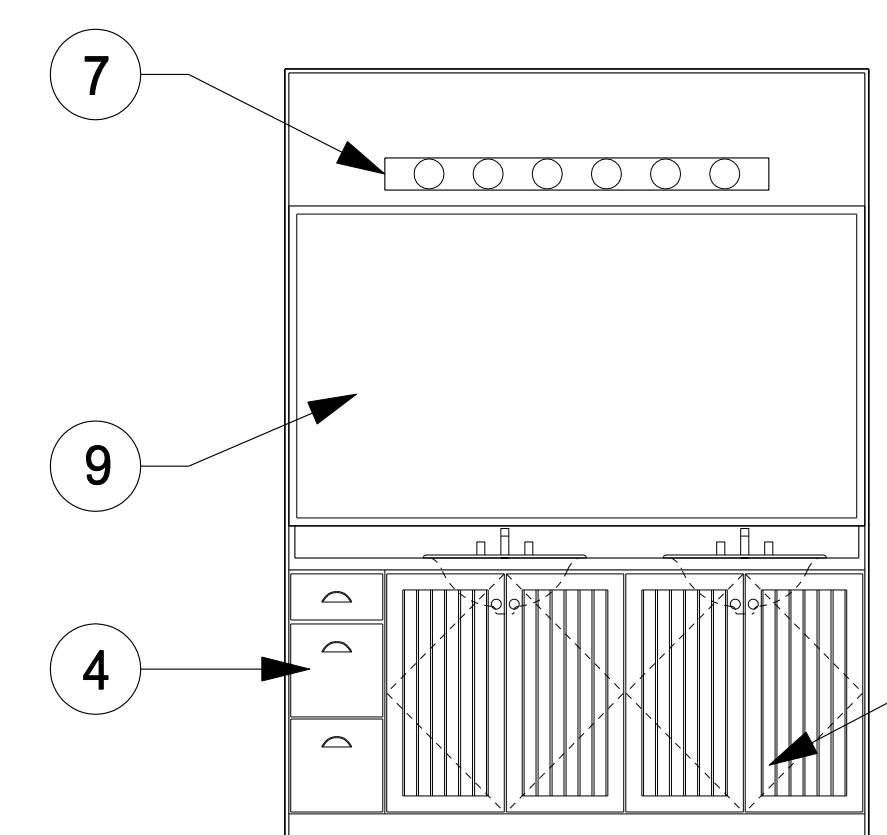
3



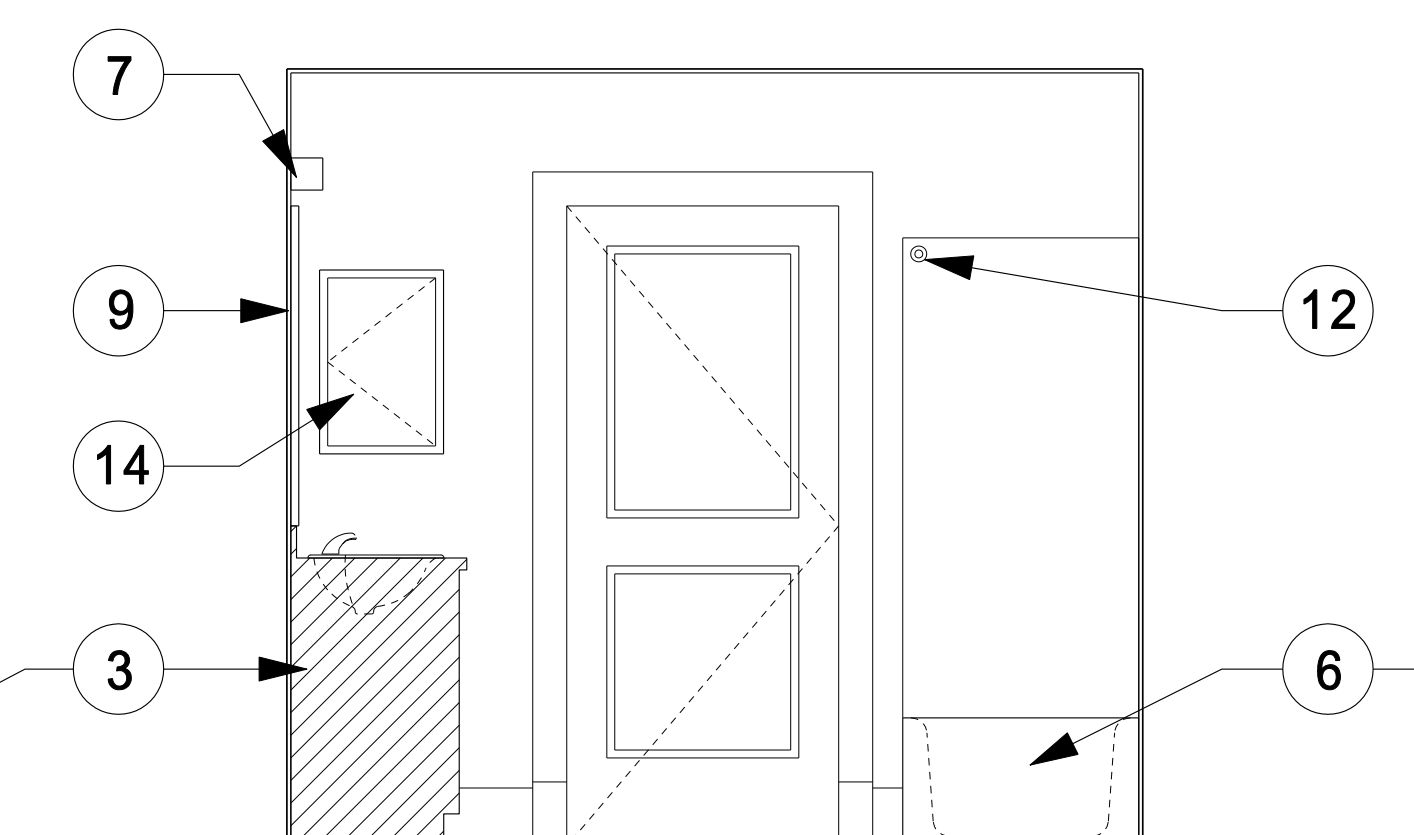
4



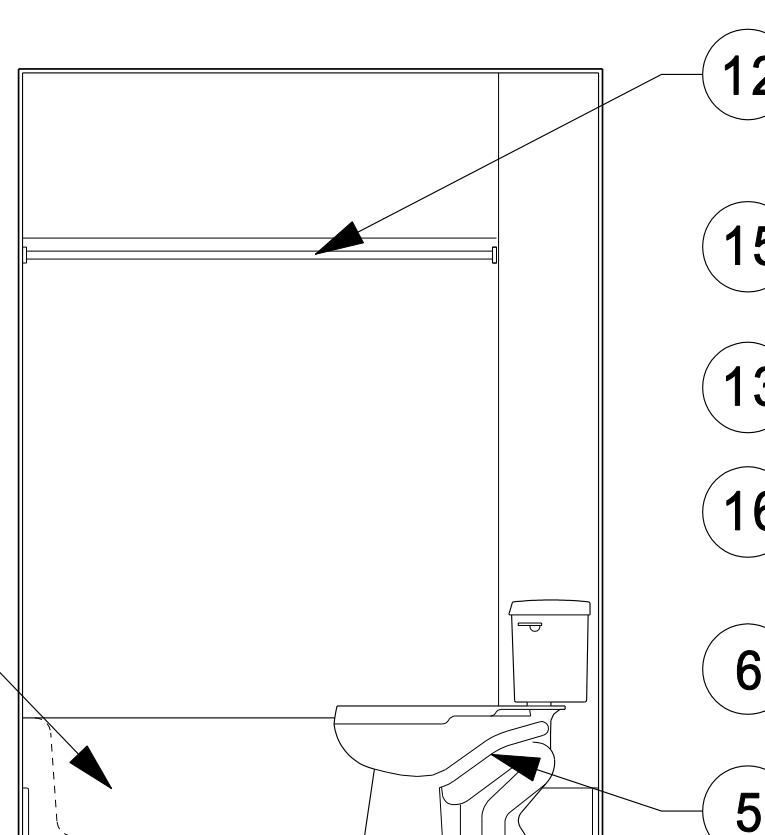
MASTER BATH



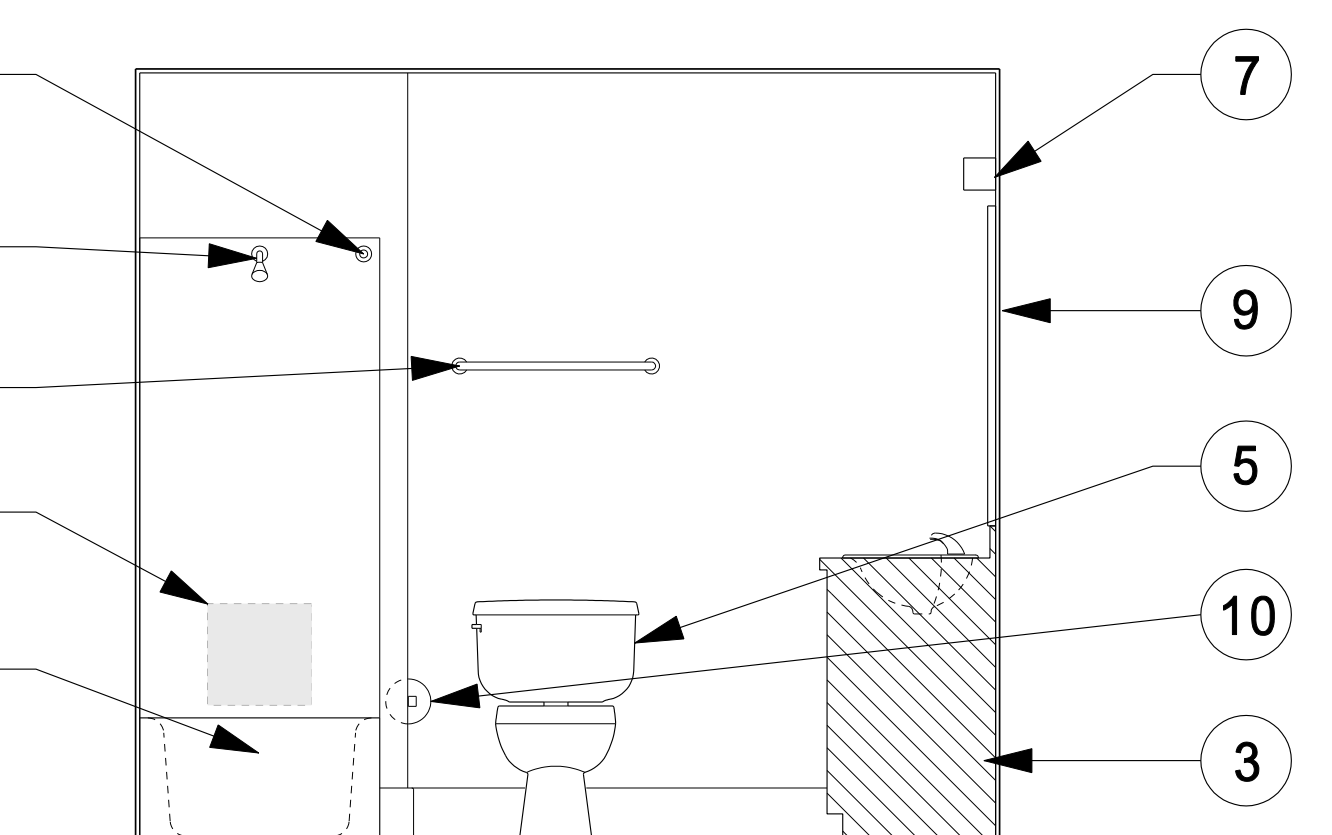
1



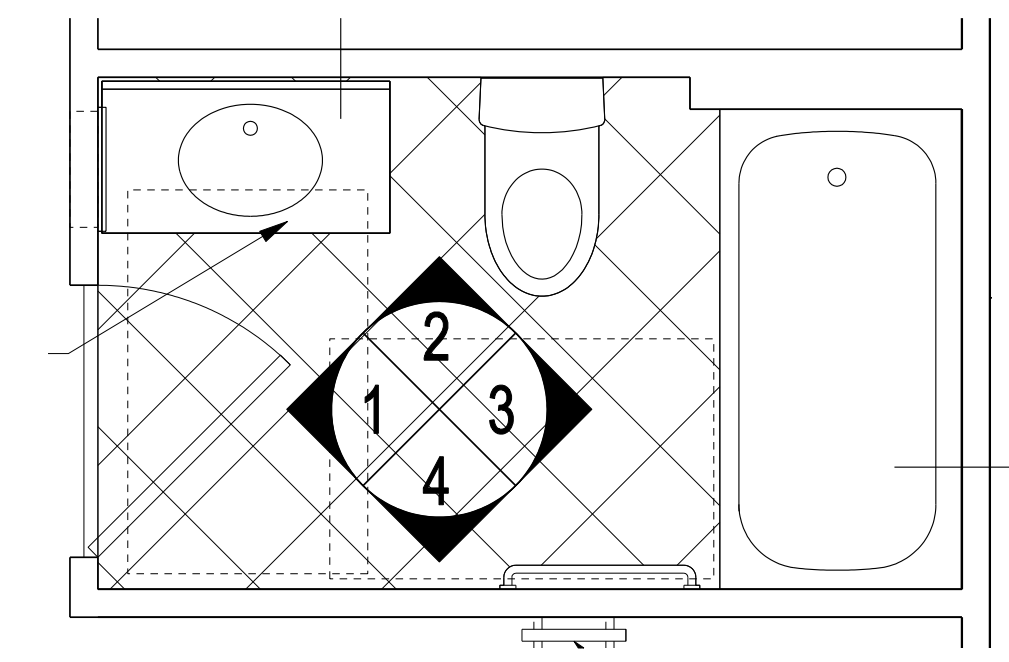
2



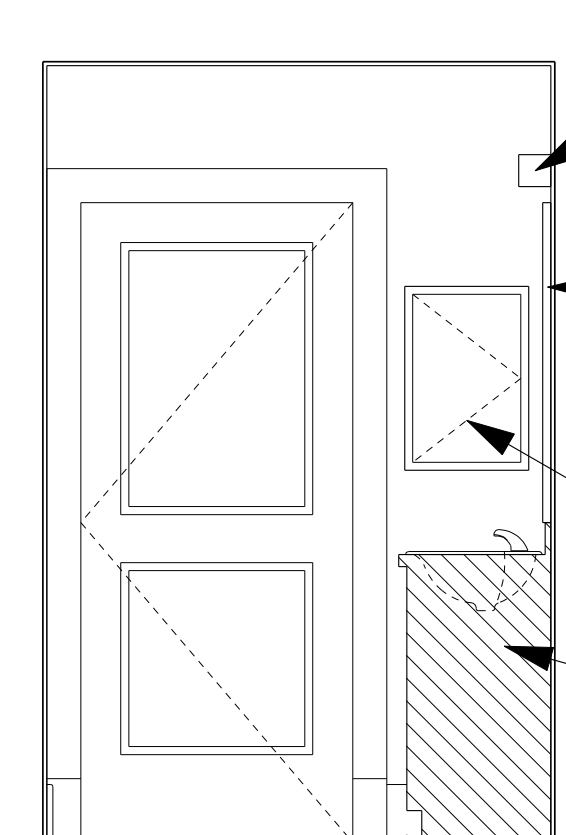
3



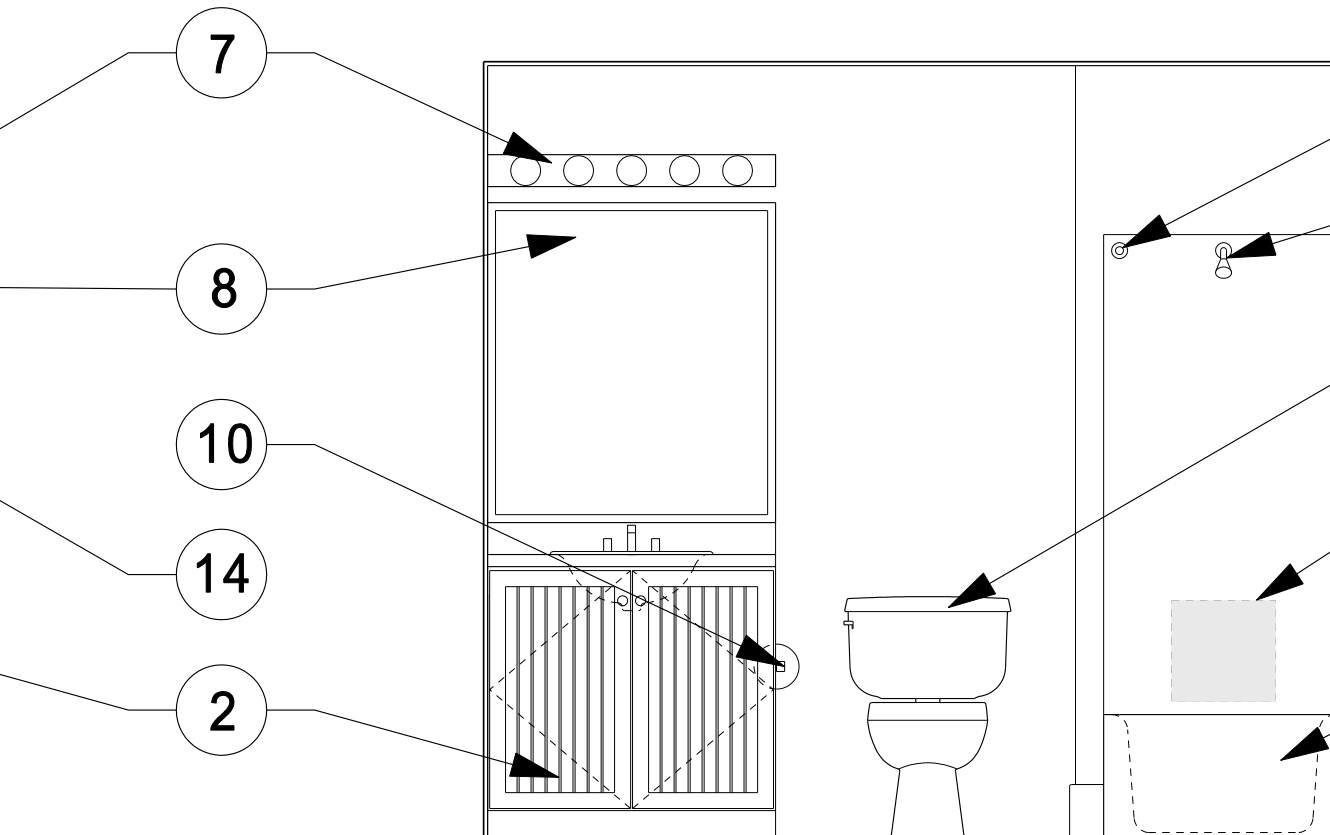
4



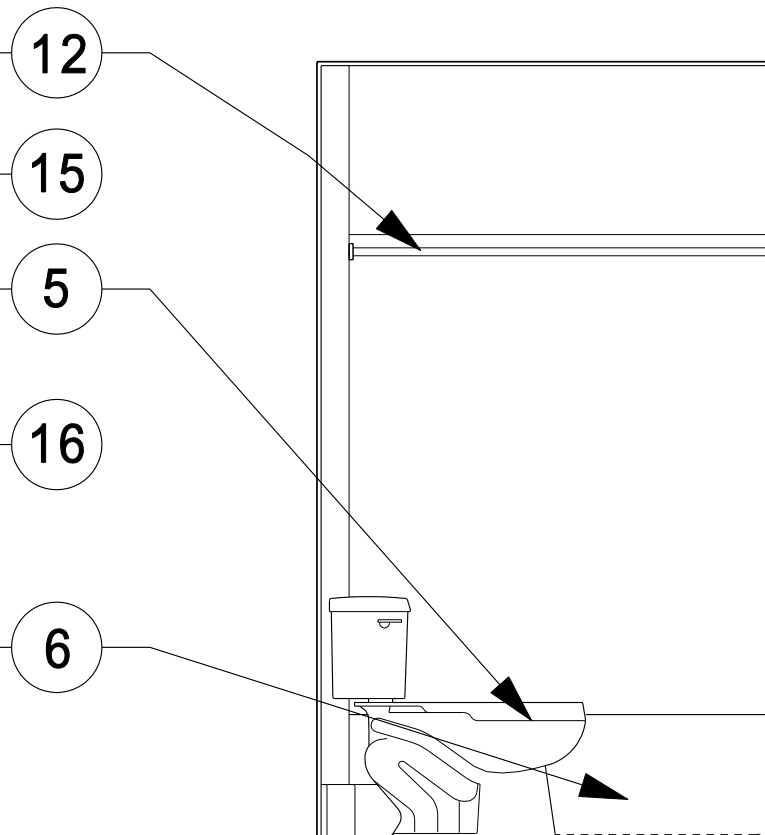
HALL BATH



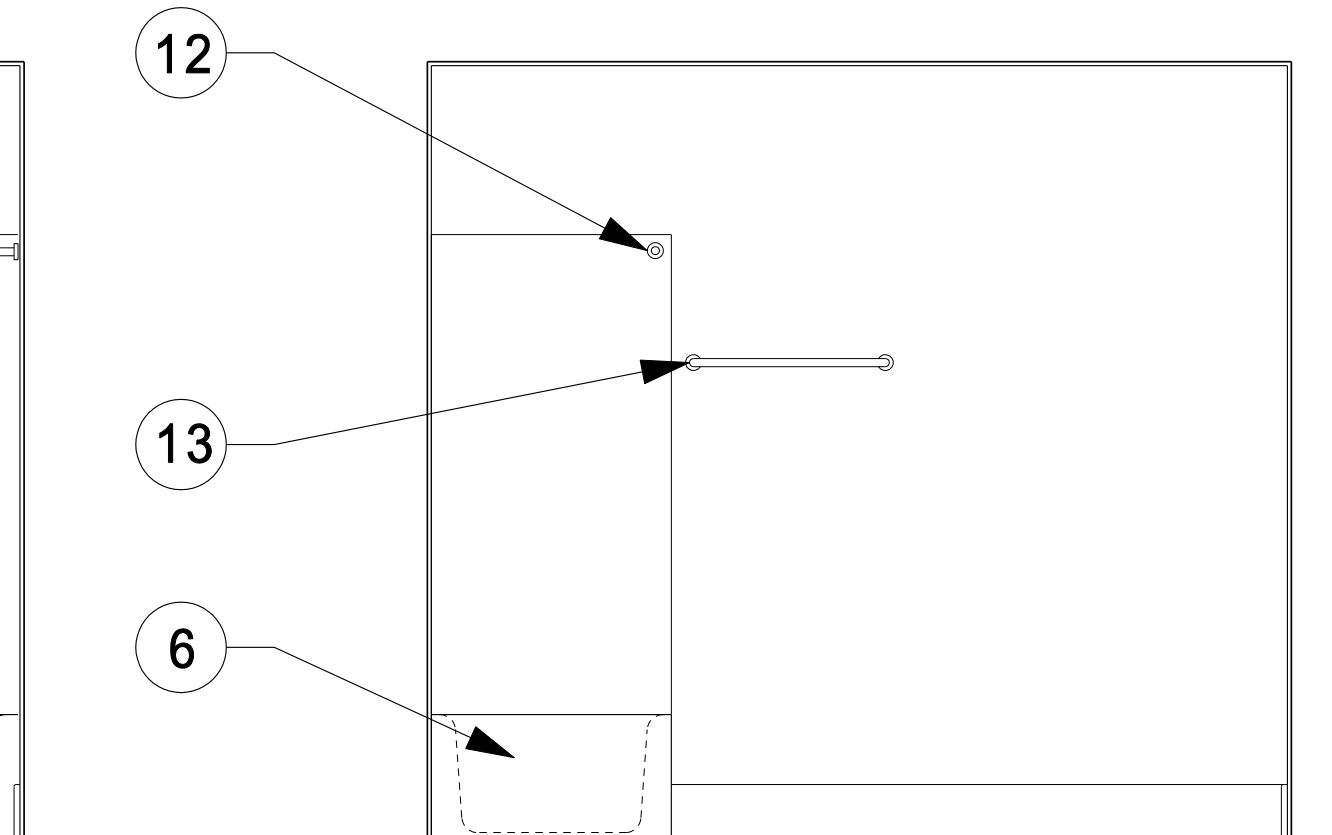
1



2



3



4

BATHROOM ACCESSORIES SCHEDULE

SCHEDULED ITEMS	
1	36" VANITY / BASE CABINET
2	36" SPACE SAVER VANITY / BASE CABINET
3	60" VANITY / BASE CABINET
4	12" VANITY DRAWER BASE CABINET
5	TOILET
6	BATHTUB
7	LIGHT FIXTURE (TO BE SELECTED)
8	36" MIRROR
9	72" MIRROR
10	TOILET PAPER HOLDER
11	OPTIONAL TUB
12	SHOWER CURTAIN ROD
13	24" TOWEL BAR
14	MEDICINE CABINET - RECESSED MOUNT
15	SHOWER HEAD
16	CONTROL AREA

BATHROOMS GENERAL NOTES:
 1. PROVIDE REINFORCING FOR ALL TOWEL BARS.
 2. HEIGHT FROM FIN. FLOOR TO VANITY TOP TO BE 34" TYPICAL

Source: C:\p0505127\p0505050\arch\A801\A801.SHT
 File: 3/9/2007 2:06:15 PM
 User: f.s.
 Plot: PDF_3042.plt