

These construction documents were prepared specifically for the project site located at 2503 Parker Street, Omaha, NE. Subsequent use and/or modification of these documents for any project is strictly prohibited unless the documents are reviewed, modified and sealed by a registered architect in the jurisdiction of the proposed project for code compliance, constructability and site adaptation; the project is a HUD project; and, all users and the registered architect agree to defend, indemnify, and hold harmless Torti Gallas And Partners, Inc., its successors and the past, present and future employees of all of them, from all claims, losses, damages, judgments, cost, including reasonable attorney fees, and expenses that relate to or arise, in any way, out of the use or modification of the documents for other projects. Torti Gallas And Partners, Inc. retains all common law and statutory copyrights in these documents and their content. Any copying, use or modification of these documents without strict adherence to these conditions will be prosecuted as a violation of these copyrights.

**Key Plan**

**Revisions**

No. 01 Date 11/24/06  
General Revisions

**Building Elevations**

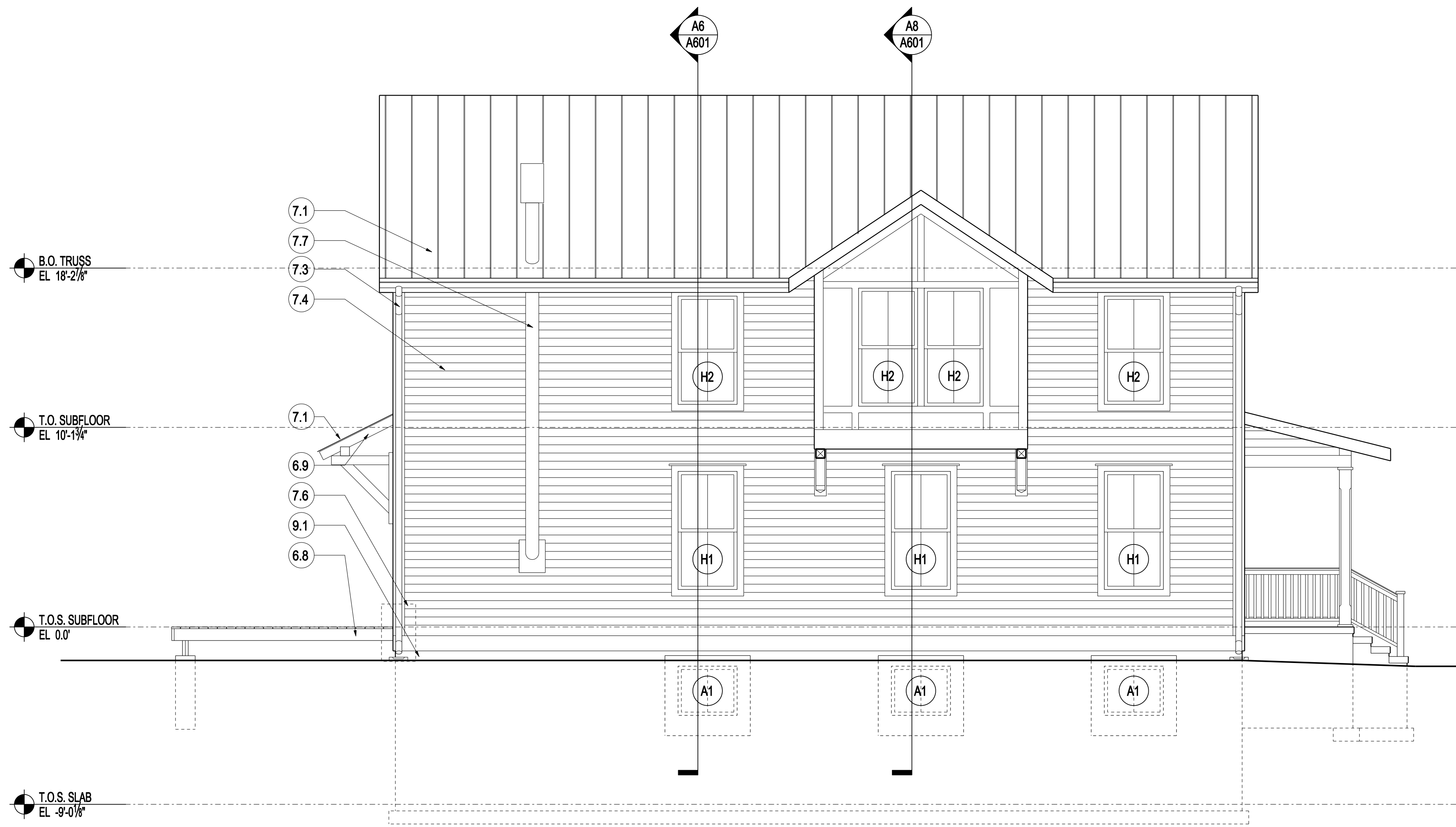
Date  
10/31/06  
Principal In Charge  
B.K.  
Project Designer  
M.B.  
Project Architect  
F.S.

Drawn  
B.K., F.S.  
Job No.  
05127.03

Scale  
1/4" = 1' - 0"

Drawing No.  
**A501**

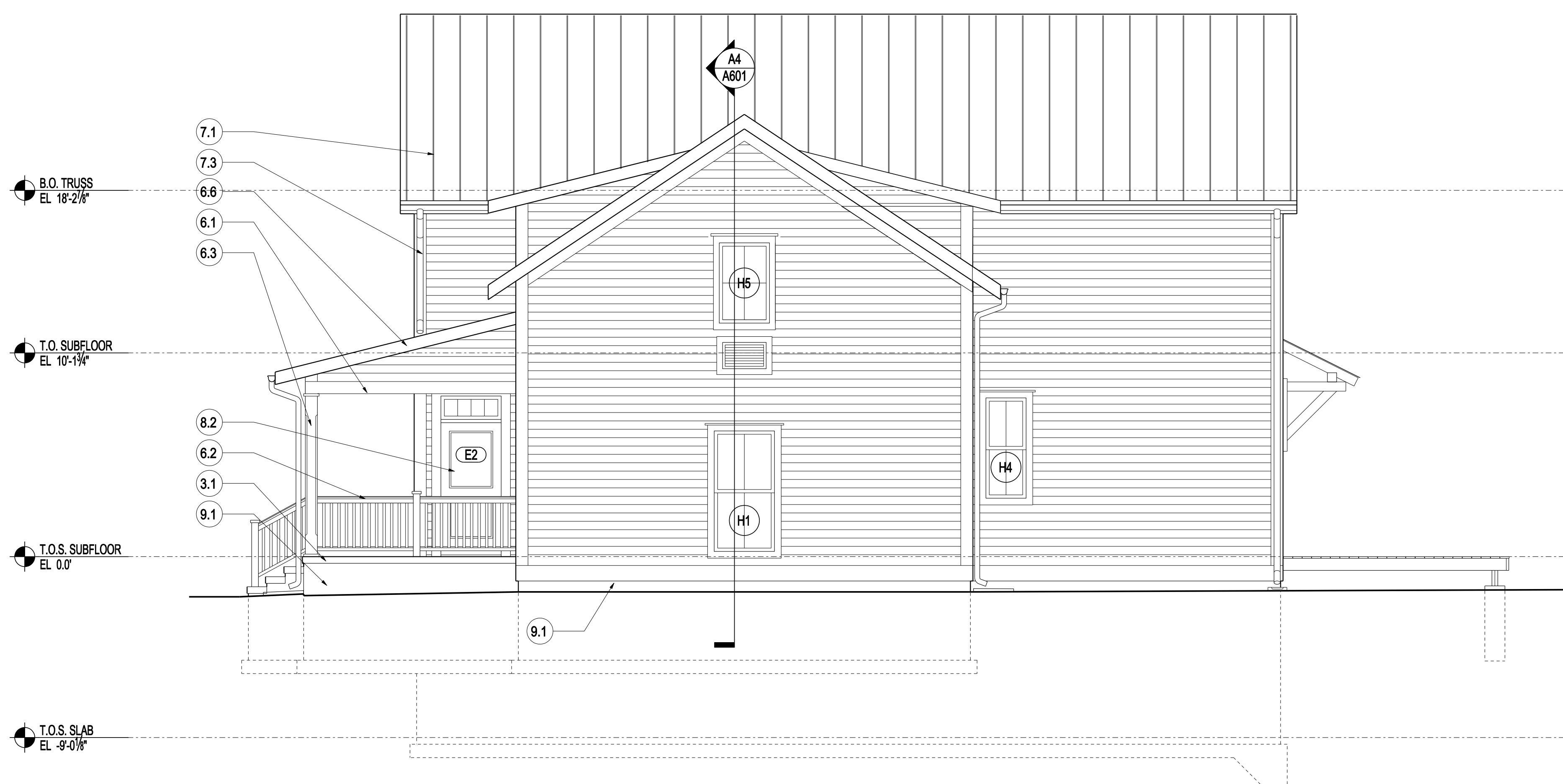
LEGEND				
3.1 CONCRETE SLAB	6.1 WOOD TRIM	7.1 METAL ROOF	8.1 VINYL WINDOW	9.1 CEMENTITIOUS FINISH
3.2 CONCRETE WALL	6.2 VINYL RAILING	7.2 METAL GUTTER	8.2 METAL DOOR	
	6.3 WOOD COLUMN	7.3 METAL DOWNSPOUT	8.3 GARAGE DOOR	
	6.4 WOOD BRACKET	7.4 4.5" VINYL SIDING		
	6.5 FASCIA BOARD	7.5 SPLASHBLOCK		
	6.6 RAKE BOARD	7.6 RAIN BARREL*		
	6.7 SIMSBOARD	7.7 CHIMNEY EXHAUST		
	6.8 DECK			
	6.9 WOOD CANOPY			



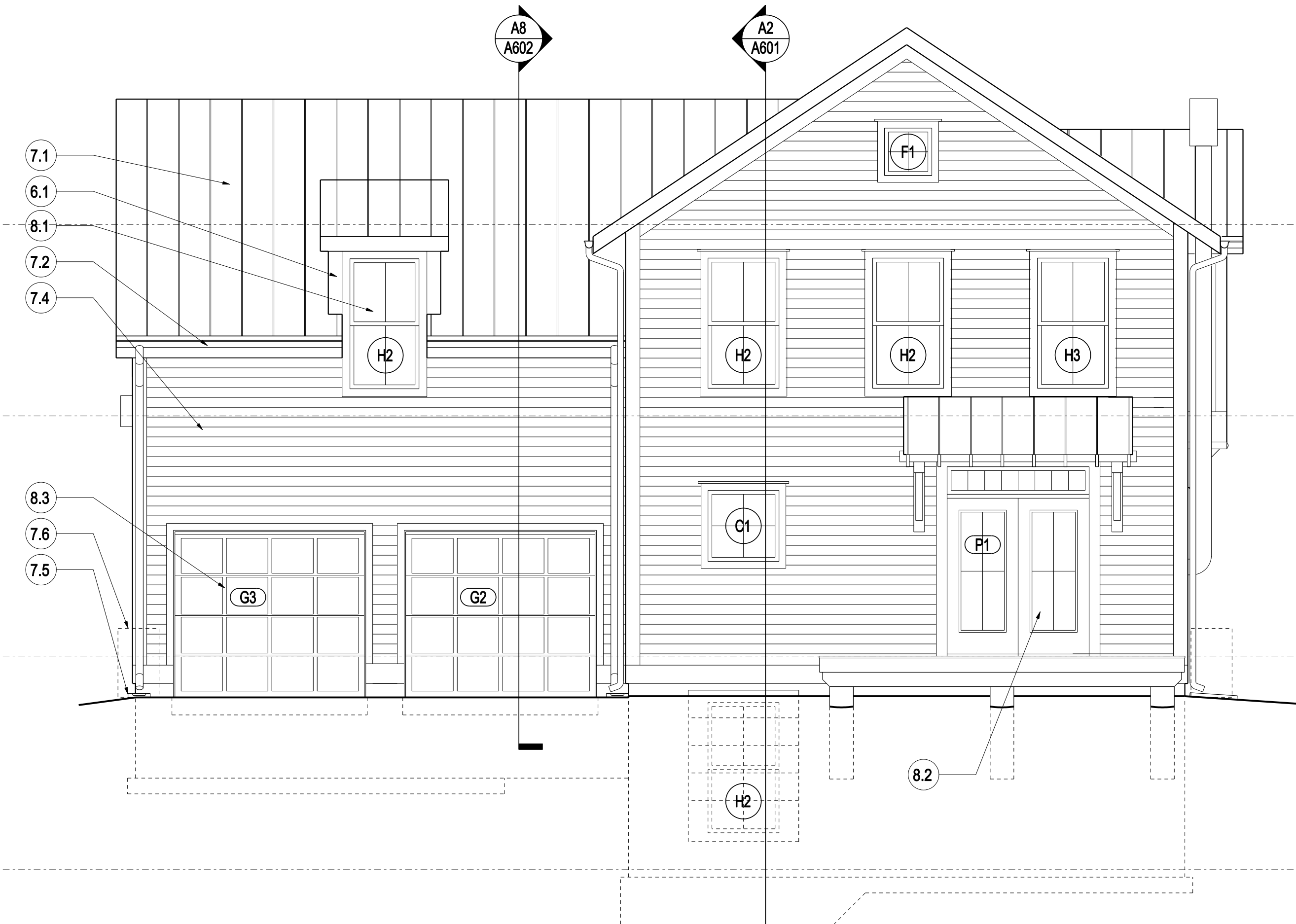
**1 LEFT ELEVATION**  
1/4"=1'-0"



**2 FRONT ELEVATION**  
1/4"=1'-0"



**3 RIGHT ELEVATION**  
1/4"=1'-0"



**4 REAR ELEVATION**  
1/4"=1'-0"